

outdoor comfort.
for any climate,
property or project

INFRATECH

PREMIUM COMFORT HEAT
PROUDLY MADE IN THE USA



THE BRAND OF CHOICE AMONG LEADING ARCHITECTS, DESIGNERS, BUILDERS AND OWNERS OF PREMIER OUTDOOR SPACES AROUND THE WORLD

indoor comfort.
for outdoor spaces.



USED BY LEADING AWARD-WINNING ARCHITECTS AND DESIGNERS FOR THEIR MOST EXCLUSIVE PROPERTIES





American craftsmanship meets industry-leading sustainability.

Infratech all-electric infrared heaters are manufactured with pride from premium quality American stainless steel, incorporating over 50 years of made in the USA craftsmanship and backed by the most extensive 3-year warranty in our industry. As the only truly zero carbon choice in our industry, we offer environmentally friendly, emission-free operation with energy-conserving zoning and dimming capabilities.

Performance and style: why top pros partner with Infratech.

When it comes to must-have amenities at the most exclusive properties, Infratech heating systems always make the cut. They offer property owners the opportunity to maximize enjoyment of outdoor living and gathering spaces — gaining up to 100 more nights outside in comfort per year for a fraction of the total build cost.

Design versatility. For year-round comfort and style.

Exclusive technology supporting smart home integration and hands-free voice activation. Designer-friendly choices including decorative covers, marine grade corrosion resistance, and diverse mounting and color options. Infratech's unparalleled customization enables seamless integration with any space, while improving comfort for homeowners and increasing revenue at commercial properties.

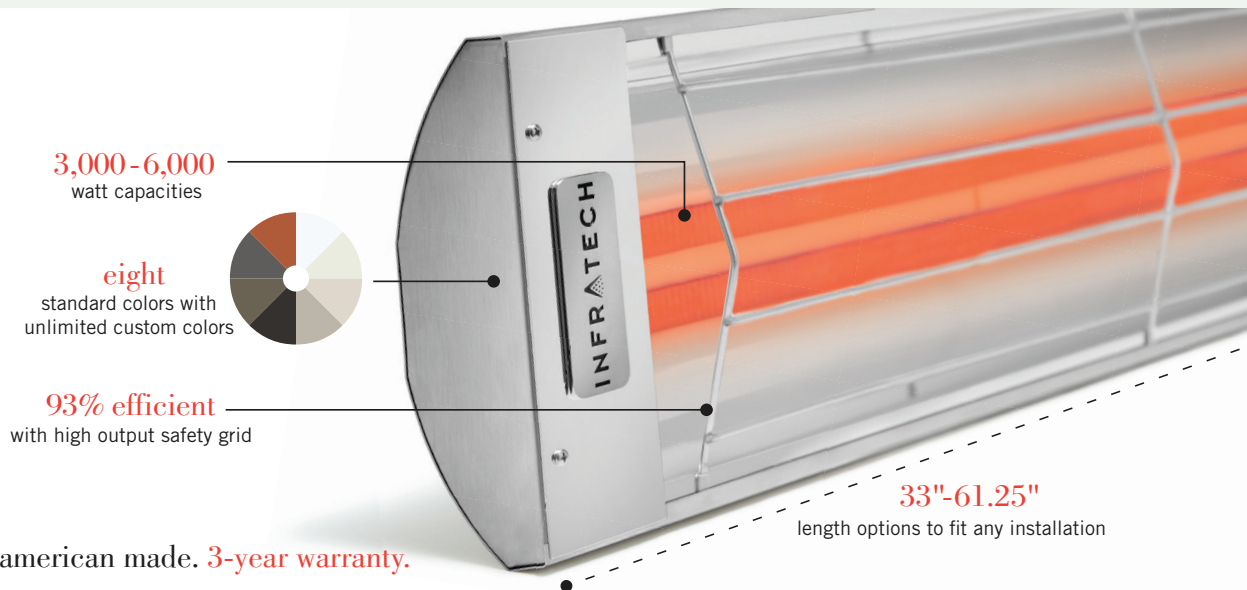


LEARN ABOUT
INFRATECH'S VISIONARIES

sleek design. for high visual impact locations.

Style and warmth for surface mount applications.

Stunning architecture deserves a designer-friendly complement. This is the inspiration for C-Series single element and CD-Series dual element heaters. Crafted from durable 304 stainless steel or optional marine grade 316 stainless steel, these fixtures are designed to combine powerful, concentrated heat with aesthetically pleasing ambience.





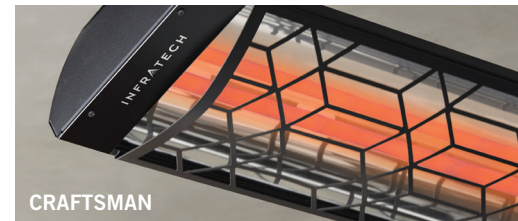
Limitless potential for customized style.

Motif laser-cut decorative covers, available in four styles and in stainless steel or black color options, create a signature visual accent. Designed to snap seamlessly onto the heater body, they offer an easy upgrade to any new or previously installed compatible Infratech heater.

MOTIF
COLLECTION



CONTEMPORARY



CRAFTSMAN



MEDITERRANEAN



TRADITIONAL



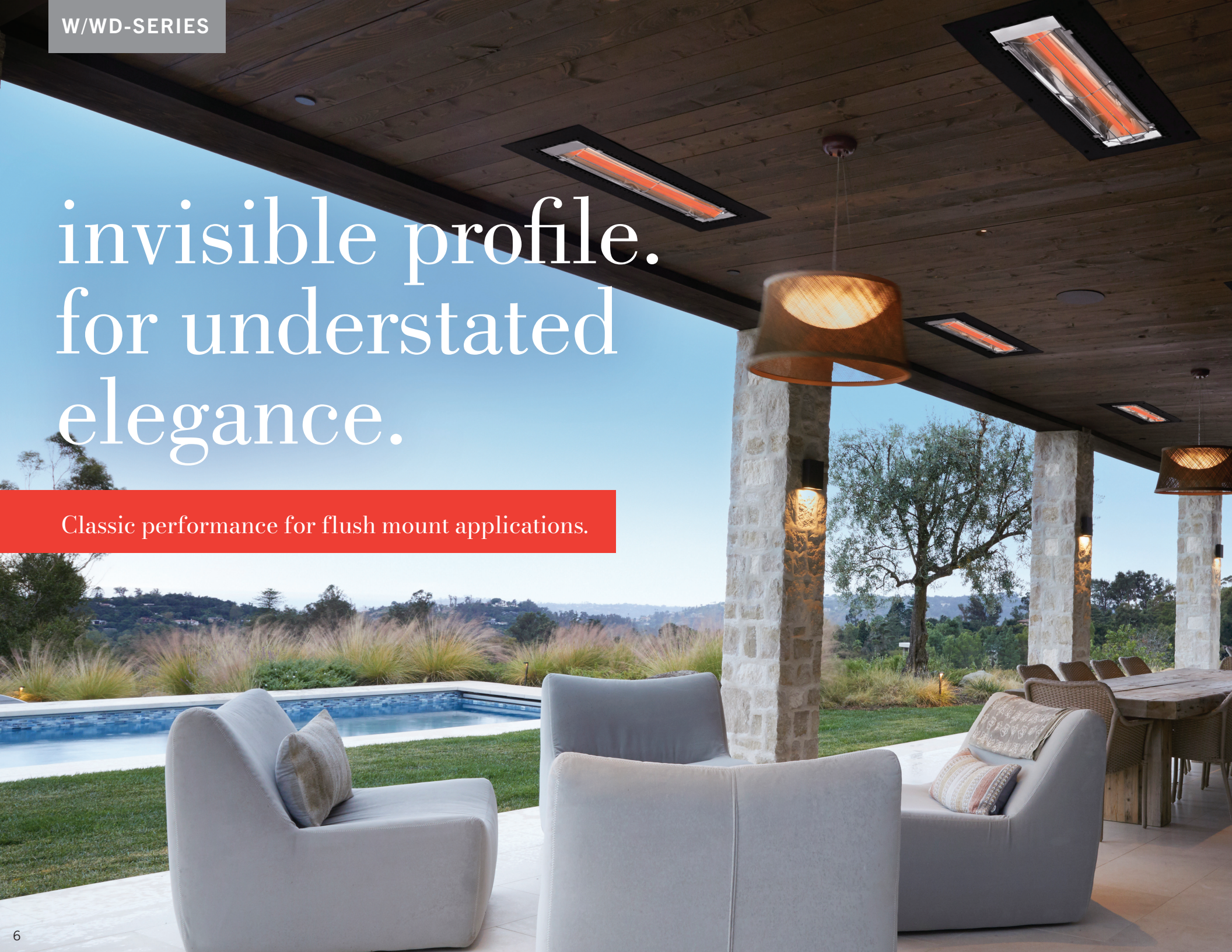
LEARN MORE
ABOUT C/CD-SERIES



LEARN MORE
ABOUT MOTIF

invisible profile. for understated elegance.

Classic performance for flush mount applications.





LEARN MORE ABOUT W/WD-SERIES



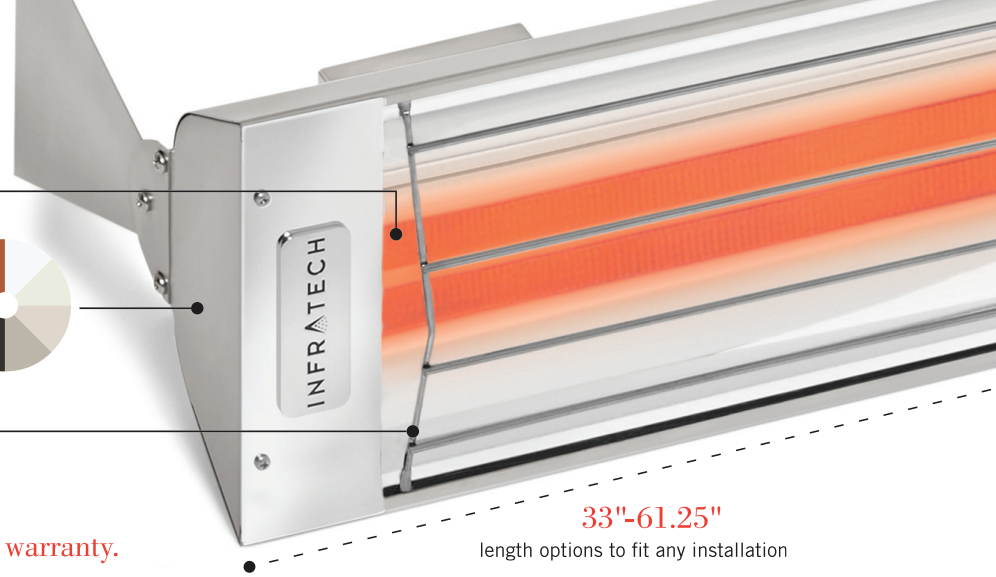
LEARN MORE ABOUT FLUSH MOUNT

3,000-6,000
watt capacities

eight
standard colors with
unlimited custom colors

93% efficient
with high output safety grid

american made. 3-year warranty.



33"-61.25"
length options to fit any installation

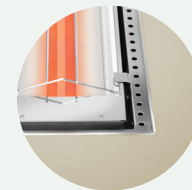
Flush-mounted Infratech W-Series single element and WD-Series dual element heaters are as stylish as they are versatile, combining ambient warmth with a clean, seamless look that vanishes into the surrounding décor. Whether installed with visible edges or fully integrated into drywall, plaster, stucco, or wood ceilings, they deliver sophisticated climate control without disrupting structural or aesthetic design. Our most popular option, flush-mounted W and WD-Series heaters are the preferred choice among interior designers, architects and construction professionals who develop today's most sought-after residential and commercial properties.



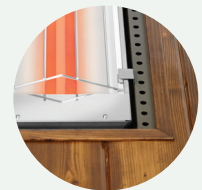
FLUSH MOUNT FRAME
ALSO AVAILABLE IN STANDARD COLORS



COLORLED FRAME OVER
FINISHED CEILING



STUCCO OVER
FRAME



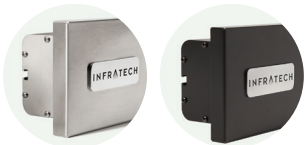
TONGUE-AND-GROOVE
OVER COLORED FRAME

streamlined style. for minimalist spaces.

A slim profile that virtually disappears into exterior structures.

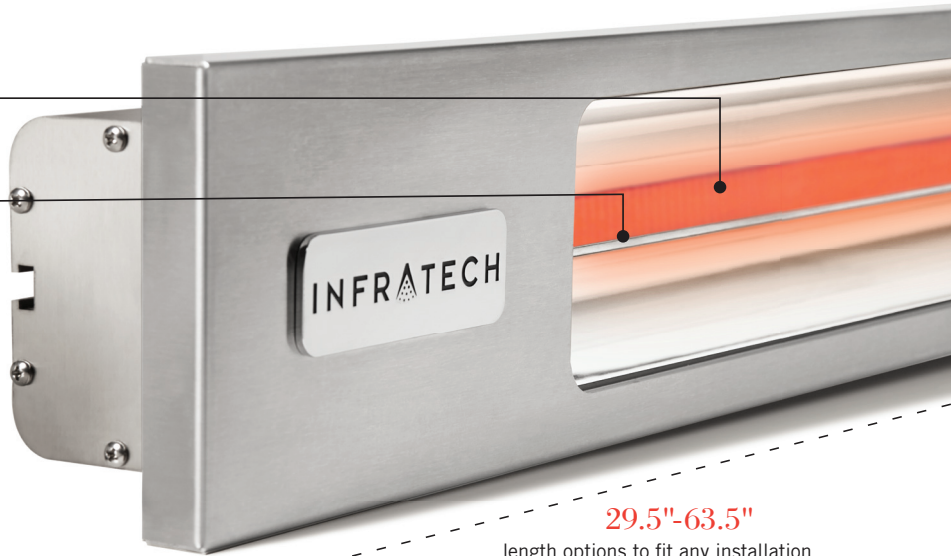
1,600-4,000
watt capacities

93% efficient
with high output safety grid



SILVER

ALL BLACK
SLIMLINE
SHADOW™



29.5"-63.5"

length options to fit any installation

american made. 3-year warranty.





Clean architectural lines call for elegant heating solutions. With a slim profile and sleek anodized aluminum housing available in Silver or Black Slimline Shadow™, Infratech's Slimline SL-Series heaters blend seamlessly into pergolas, cabanas, and other structures while delivering precise, targeted heat. Modern styling, flexible mounting options, and a narrow profile make these heaters the perfect choice for minimalist surface mount applications.



LEARN MORE
ABOUT SL-SERIES



custom built controls. for ultimate comfort.

UL-approved manufacturing for your specific job.

Designer-friendly choices and simple ease of use. Smart home integration, hands-free voice activation, timer functionality, zone heating, and infinite heat control. Our UL 508A-compliant controls are custom built for your specific requirements. No matter your need, our custom controls can help you get the most enjoyment out of your Infratech heating systems. We offer options compatible with any heating configuration, setting or budget, for residential and commercial spaces of all sizes.



Industry-leading Custom Controls: timing, dimming, zoning, and beyond.



Hands-free activation meets design versatility. Control your heater via WiFi/Bluetooth using your smartphone, voice commands through your smart home assistant, the included smart dimmer, or any 120V lighting interface of your choice.



Seamless smart home integration with leading systems such as Lutron™, Crestron™, Control 4™, Savant™ and more for robust functionality including setting scenes, schedules, and coordination with other automated accessories such as lighting and shades.



Versatile commercial controls with efficient management of multiple heaters across any space, from intimate nightclubs to sprawling resorts. Simple, intuitive controls ensure easy operation for staff members.



UNIVERSAL CONTROL PACKAGES
SMART DIMMER INCLUDED (COMING SOON)



HOME MANAGEMENT SYSTEMS
USED WITH EXISTING SMART HOME SYSTEM



SOLID STATE CONTROL PACKAGES
USED WITH INFRA TECH'S ZONE ANALOG CONTROLLERS (PHOTO ABOVE)

Value Controls for easy, dependable use.

Infratech offers an assortment of Value Controls to help you enjoy efficient ease of use that's compatible with any budget. All assemblies are available in different configurations, including in-wall or surface mount options, with or without weatherproof covers. The Contactor Panel adds to Value Control options by integrating timing, zoning, and app control capabilities with its included smart switch.



DUPLEX STACK SWITCH



CONTACTOR PANEL
SMART SWITCH INCLUDED (COMING SOON)

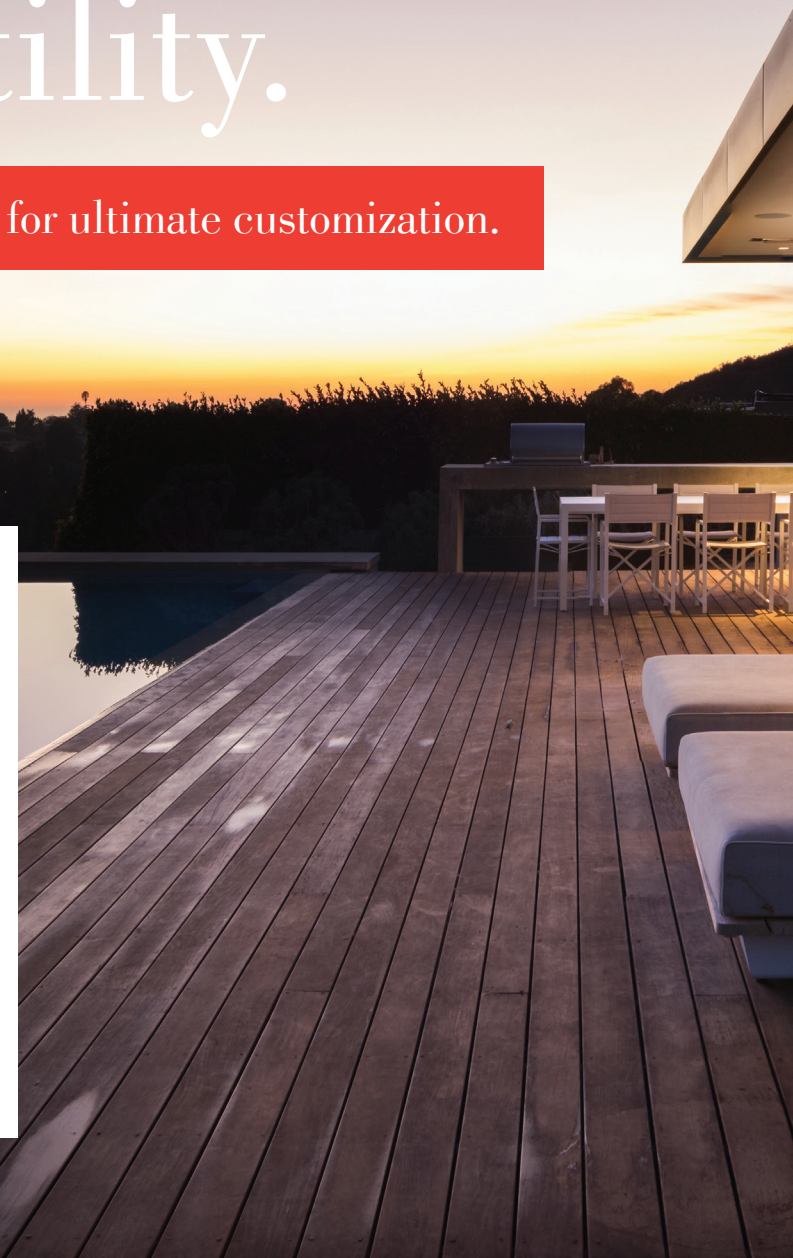
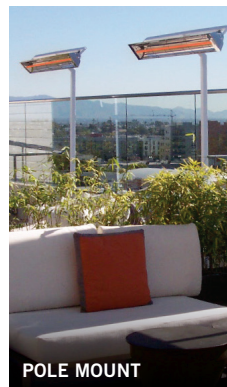


LEARN MORE
ABOUT CONTROLS

your distinct vision. our aesthetic versatility.

The widest range of designer-friendly mounting and color options, for ultimate customization.

From wall, ceiling, pole, and drop pole mounted installation to our customer favorite flush mount option, Infratech offers more choices in heater installation than any other comfort heat brand. Our heaters are UL Listed and offer ease of installation and minimal clearance requirements.



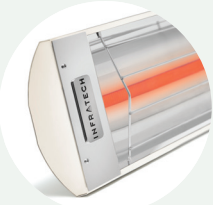


Standard and custom colors and finishes to complement your décor.

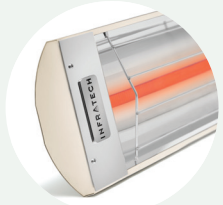
When it comes to color options, Infratech offers infinite choice. Our C, CD, W, and WD heaters and flush mount frames are available in a brushed stainless steel finish, along with a variety of standard color options. We can also create virtually any custom color finish to complement the décor of your space.



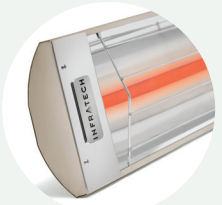
WHITE



BISCUIT



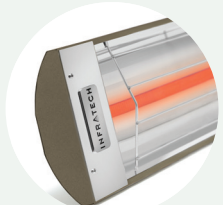
ALMOND



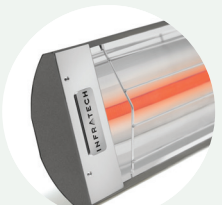
BEIGE



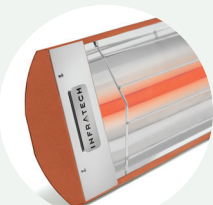
BLACK



BRONZE



GREY



COPPER



CUSTOM COLORS ALSO AVAILABLE

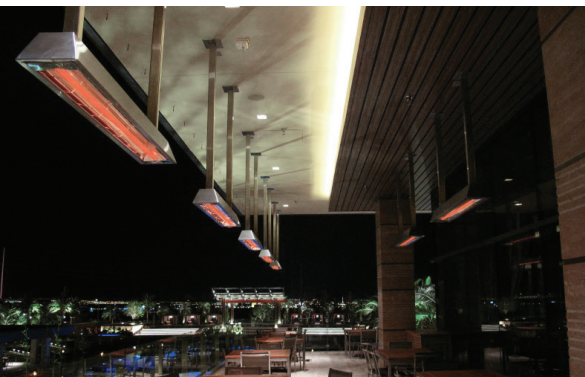


STANDARD COLOR OPTIONS CHART

exclusive custom options. from the brand of choice.

For one-of-a-kind heaters as distinctive as your projects.

Starting from planning stages, Infratech collaborates directly with designers, architects and engineers to integrate our heaters into custom fixtures and installations, with colors, profiles, control options and heating capacities tailored for each specific project. Infratech's diverse experience and extensive manufacturing capabilities allow us to provide a wide range of solutions that meet your specific needs — for limitless possibilities when it comes to aesthetic choice, functionality, and performance.



LEARN MORE ABOUT
CUSTOM DESIGN



Marine-grade durability. For even longer-lasting performance.

Infratech's Marine UpGrade allows you to extend the lifespan of your Infratech heaters in coastal and other harsh conditions. Available for W/WD-Series heaters, C/CD-Series heaters, and flush mount frames, this upgrade enhances durability in challenging environments. While all Infratech heaters are constructed using 304 stainless steel, a high-grade, corrosion-resistant material, the Marine UpGrade options — including heaters, Motif decorative covers, and flush mount frames — feature more robust anti-corrosive 316 stainless steel.



LEARN MORE ABOUT
MARINE UPGRADE

your vision. our customer service team's product and design expertise.

Complimentary heating plans tailored to your projects.

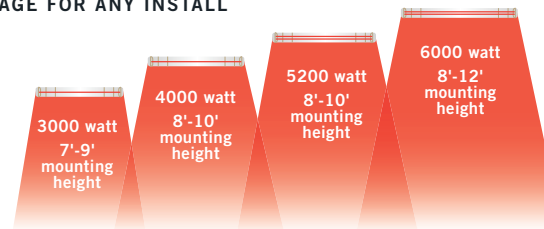
American-made quality. Industry-leading design services. From heater sizes and capacities to installation, color, accessory and control options, our knowledgeable customer service team can make the best recommendations for your project.



START YOUR COMPLIMENTARY INFRA TECH HEATING PLAN HERE OR BY VISITING INFRA TECH.COM/DESIGN



HEAT COVERAGE FOR ANY INSTALL



MODEL	COVERAGE AREA	MOUNTING HEIGHT	MODEL	COVERAGE AREA	MOUNTING HEIGHT
33" 3000 WATTS	7' X 7'	7'-8'	39" 4000 WATTS	8' X 10'	8'-10'
42.5" 2400 WATTS	7' X 7'	7'-8'	48" 5200 WATTS	10' X 10'	8'-10'
61.25" 3000 WATTS	8' X 8'	7'-9'	61.25" 4000 WATTS	10' X 10'	8'-10'
63.5" 3000 WATTS	8' X 8'	7'-9'	63.5" 4000 WATTS	10' X 10'	8'-10'
			61.25" 6000 WATTS	11' X 11'	8'-12'



344 W 157th Street Gardena, CA 90248
 TEL 800-421-9455 or 310-354-1250 FAX 310-523-3674
 NEED ASSISTANCE? INFRA TECH.COM | SALES@INFRA TECH.COM

THREE YEAR WARRANTY

