

PREMIUM GRILLS AND ACCESSORIES

# DELTA HEAT COLLECTION



 **DOMETIC**



**DELTA HEAT COLLECTION**

Ready for the Weekend	4
Delta Heat Gas Grills	6
Color Edition	10
Teppanyaki	12
Power Burner	13
Side Burner	14
Drop-In Side Burner	15
Grill Accessories	16
Pizza Oven	18
Access Doors and Drawers	20
Cutout Dimensions	22



## READY FOR THE WEEKEND

We understand that the right features, exceptional performance and longevity are important to you. We also understand that style and design are key factors when selecting your outdoor appliances. Every Delta Heat product comes with an unmistakable appeal that meets and exceeds these requirements. After all, your home is a reflection of your personal style. Your grill and outdoor kitchen should not be an exception.



FULLY FEATURED, MADE IN USA  
**DELTA HEAT GAS GRILLS**

**Standard Features**

- 304 stainless steel with seamless welded construction, sleek high-polished accents
- Double-lined hood for maximum strength and durability
- 18 gauge stainless steel U-Burners and ceramic briquettes distribute direct and radiant heat more evenly across the cooking surface
- Stainless steel cooking grates
- Decorative blue LED lights illuminate the control knobs turning your grill into the main attraction
- Interior halogen lights illuminate the main cooking surface for nighttime grilling
- Over-sized warming/cooking rack
- Designed and manufactured in Southern California



**LED Control Panel Lights**  
Decorative control panel illumination



**Premium Cooking System**  
Powerful direct and radiant heat



**High Polished Accents**  
A luxurious refinement to your grill

**THE RIGHT GRILL FOR YOU**

Delta Heat grills are fully featured and exceptionally built. Ready to go with everything you need to master the art of grilling. Available in three sizes (26", 32", and 38") to suit your outdoor kitchen project. Every grill is the beneficiary of decades of engineering and design expertise. Grill with style and confidence. Your family and friends will appreciate the difference.

Delta Heat grills are designed and manufactured in Southern California from the highest quality 304 stainless steel. Equipped with high performance 18 gauge stainless steel U-burners that work in conjunction with ceramic briquettes to delivery intense, controllable heat.



DHBQ38RS



**Temperature Gauge**  
Monitor internal ambient temperature



**Easy to Open Hood Assist**  
Reduced weight when opening



**Charcoal Tray (optional accessory)**  
Lump charcoal or wood made easy

# SELECT YOUR MODEL



**DELTA HEAT 26**  
26 inch outdoor gas grill

<b>DHBQ26G-D</b>	(2) Main Burners
<b>POWER REQUIREMENTS</b>	<b>Electrical Supply</b> 120V, 60Hz, 4A <b>Electrical Service</b> 15 amp dedicated circuit <b>Power Cord Length</b> 5 feet <b>Receptacle</b> 3 prong grounding plug
<b>GAS REQUIREMENTS</b>	Natural Gas or Liquid Propane <b>Gas Supply</b> 3/4" ID line <b>Gas Inlet</b> 1/2" NPT female <b>Total BTU</b> 31,000
<b>CLEARANCE REQUIREMENTS</b>	<b>Combustible</b> Requires Insulating Jacket and Minimum 12" all around <b>Non-Combustible</b> Minimum 3" from back, Minimum 6" on sides
<b>CUTOUT DIMENSIONS</b>	<b>Opening Width</b> 24.50 inch <b>Opening Height</b> 9.50 inch <b>Opening Depth</b> 19.75 inch



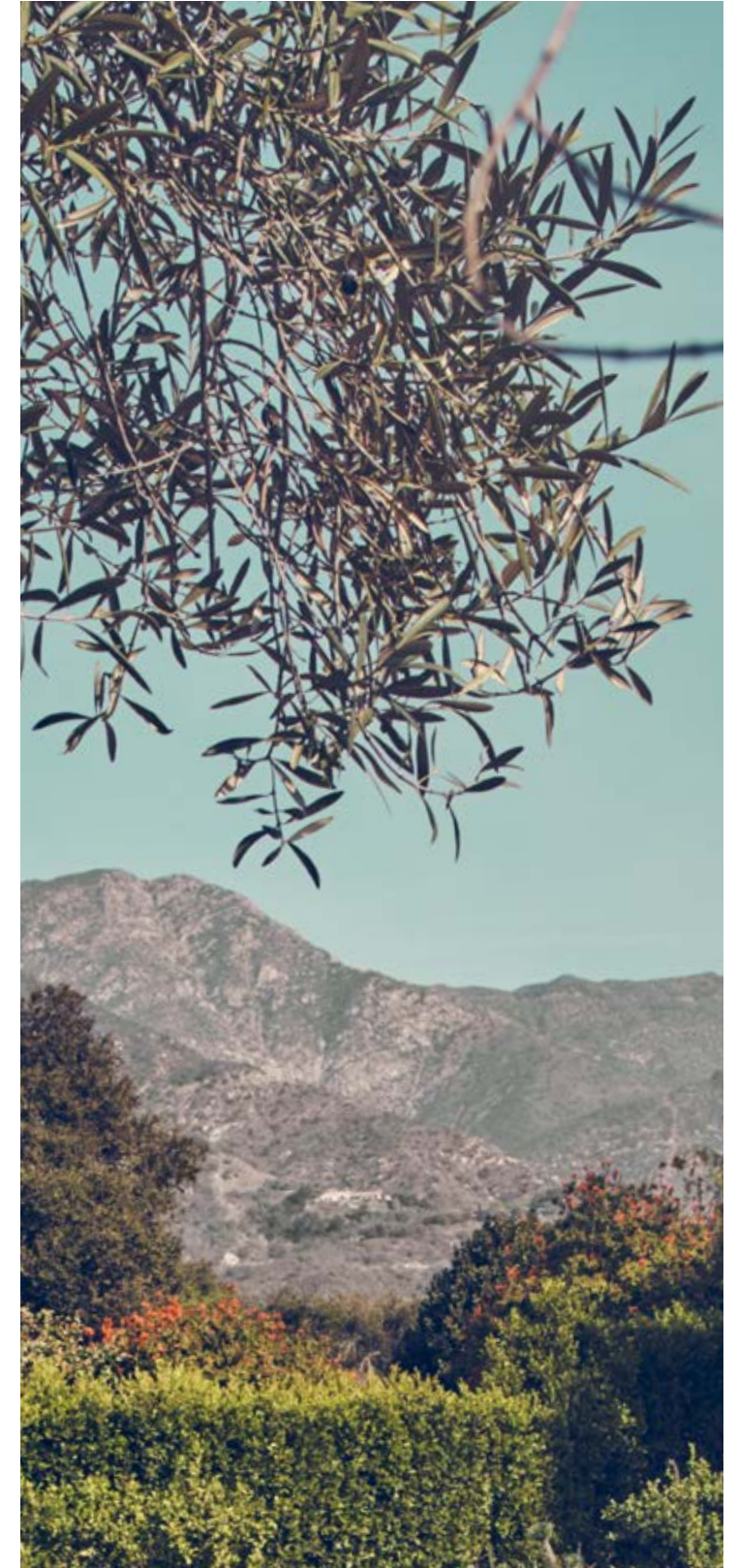
**DELTA HEAT 32**  
32 inch outdoor gas grill

<b>DHBQ32G-D</b> <b>DHBQ32R-D</b> <b>DHBQ32RS-D</b>	(3) Main Burners (3) Main Burners and Rotisserie (2) Main Burner, (1) Sear Burner and Rotisserie
<b>POWER REQUIREMENTS</b>	<b>Electrical Supply</b> 120V, 60Hz, 4A <b>Electrical Service</b> 15 amp dedicated circuit <b>Power Cord Length</b> 5 feet <b>Receptacle</b> 3 prong grounding plug
<b>GAS REQUIREMENTS</b>	Natural Gas or Liquid Propane <b>Gas Supply</b> 3/4" ID line <b>Gas Inlet</b> 1/2" NPT female <b>Total BTU</b> 46,500-59,500
<b>CLEARANCE REQUIREMENTS</b>	<b>Combustible</b> Requires Insulating Jacket and Minimum 12" all around <b>Non-Combustible</b> Minimum 3" from back, Minimum 6" on sides
<b>CUTOUT DIMENSIONS</b>	<b>Opening Width</b> 30.50 inch <b>Opening Height</b> 9.50 inch <b>Opening Depth</b> 19.75 inch



**DELTA HEAT 38**  
38 inch outdoor gas grill

<b>DHBQ38G-D</b> <b>DHBQ38R-D</b> <b>DHBQ38RS-D</b>	(3) Main Burners (3) Main Burners and Rotisserie (2) Main Burner, (1) Sear Burner and Rotisserie
<b>POWER REQUIREMENTS</b>	<b>Electrical Supply</b> 120V, 60Hz, 4A <b>Electrical Service</b> 15 amp dedicated circuit <b>Power Cord Length</b> 5 feet <b>Receptacle</b> 3 prong grounding plug
<b>GAS REQUIREMENTS</b>	Natural Gas or Liquid Propane <b>Gas Supply</b> 3/4" ID line <b>Gas Inlet</b> 1/2" NPT female <b>Total BTU</b> 46,500-59,500
<b>CLEARANCE REQUIREMENTS</b>	<b>Combustible</b> Requires Insulating Jacket and Minimum 12" all around <b>Non-Combustible</b> Minimum 3" from back, Minimum 6" on sides
<b>CUTOUT DIMENSIONS</b>	<b>Opening Width</b> 36.50 inch <b>Opening Height</b> 9.50 inch <b>Opening Depth</b> 19.75 inch



# COLOR EDITION



## DELTA HEAT 32 WHITE

32 inch outdoor gas grill

**DHBQ32R-W** (3) Main Burners and Rotisserie  
**DHBQ32RS-W** (2) Main Burner, (1) Sear Burner and rotisserie

**POWER REQUIREMENTS** **Electrical Supply** 120V, 60Hz, 4A  
**Electrical Service** 15 amp dedicated circuit  
**Power Cord Length** 5 feet  
**Receptacle** 3 prong grounding plug

**GAS REQUIREMENTS** Natural Gas or Liquid Propane  
**Gas Supply** 3/4" ID line  
**Gas Inlet** 1/2" NPT female  
**Total BTU** 46,500-59,500

**CLEARANCE REQUIREMENTS** **Combustible** Requires Insulating Jacket and Minimum 12" all around  
**Non-Combustible** Minimum 3" from back, Minimum 6" on sides

**CUTOUT DIMENSIONS** **Opening Width** 30.50 inch  
**Opening Height** 9.50 inch  
**Opening Depth** 19.75 inch

## DELTA HEAT 38 WHITE

38 inch outdoor gas grill

**DHBQ38R-W** (3) Main Burners and Rotisserie  
**DHBQ38RS-W** (2) Main Burner, (1) Sear Burner and rotisserie

**POWER REQUIREMENTS** **Electrical Supply** 120V, 60Hz, 4A  
**Electrical Service** 15 amp dedicated circuit  
**Power Cord Length** 5 feet  
**Receptacle** 3 prong grounding plug

**GAS REQUIREMENTS** Natural Gas or Liquid Propane  
**Gas Supply** 3/4" ID line  
**Gas Inlet** 1/2" NPT female  
**Total BTU** 46,500-59,500

**CLEARANCE REQUIREMENTS** **Combustible** Requires Insulating Jacket and Minimum 12" all around  
**Non-Combustible** Minimum 3" from back, Minimum 6" on sides

**CUTOUT DIMENSIONS** **Opening Width** 36.50 inch  
**Opening Height** 9.50 inch  
**Opening Depth** 19.75 inch

## DELTA HEAT 32 BLACK

32 inch outdoor gas grill

**DHBQ32R-K** (3) Main Burners and Rotisserie  
**DHBQ32RS-K** (2) Main Burner, (1) Sear Burner and rotisserie

**POWER REQUIREMENTS** **Electrical Supply** 120V, 60Hz, 4A  
**Electrical Service** 15 amp dedicated circuit  
**Power Cord Length** 5 feet  
**Receptacle** 3 prong grounding plug

**GAS REQUIREMENTS** Natural Gas or Liquid Propane  
**Gas Supply** 3/4" ID line  
**Gas Inlet** 1/2" NPT female  
**Total BTU** 46,500-59,500

**CLEARANCE REQUIREMENTS** **Combustible** Requires Insulating Jacket and Minimum 12" all around  
**Non-Combustible** Minimum 3" from back, Minimum 6" on sides

**CUTOUT DIMENSIONS** **Opening Width** 30.50 inch  
**Opening Height** 9.50 inch  
**Opening Depth** 19.75 inch

## DELTA HEAT 38 BLACK

38 inch outdoor gas grill

**DHBQ38R-K** (3) Main Burners and Rotisserie  
**DHBQ38RS-K** (2) Main Burner, (1) Sear Burner and rotisserie

**POWER REQUIREMENTS** **Electrical Supply** 120V, 60Hz, 4A  
**Electrical Service** 15 amp dedicated circuit  
**Power Cord Length** 5 feet  
**Receptacle** 3 prong grounding plug

**GAS REQUIREMENTS** Natural Gas or Liquid Propane  
**Gas Supply** 3/4" ID line  
**Gas Inlet** 1/2" NPT female  
**Total BTU** 46,500-59,500

**CLEARANCE REQUIREMENTS** **Combustible** Requires Insulating Jacket and Minimum 12" all around  
**Non-Combustible** Minimum 3" from back, Minimum 6" on sides

**CUTOUT DIMENSIONS** **Opening Width** 36.50 inch  
**Opening Height** 9.50 inch  
**Opening Depth** 19.75 inch

# COOKING ACCESSORIES

COMPLETE YOUR OUTDOOR KITCHEN



## Teppanyaki

Built-in outdoor teppanyaki flat top griddle, 32 inch

- LED control panel lights
- 304 stainless steel construction
- Two 18 gauge stainless steel U-burners (Total of 37,000 BTU's)
- Solid 5/16 stainless steel griddle surface
- Easy to clean, removable trough
- Stainless steel top cover
- 9V electronic ignition

<b>DHTG32</b>	Stainless Control Panel
<b>DHTG32-W</b>	White Control Panel
<b>DHTG32-K</b>	Black Control Panel

<b>POWER REQUIREMENTS</b>	<b>Electrical Supply</b> 120V, 60Hz, 4A <b>Electrical Service</b> 15 amp dedicated circuit <b>Power Cord Length</b> 5 feet <b>Receptacle</b> 3 prong grounding plug
---------------------------	--

<b>GAS REQUIREMENTS</b>	Natural Gas or Liquid Propane <b>Gas Supply</b> 3/4" ID line <b>Gas Inlet</b> 1/2" NPT female <b>Total BTU</b> 37,000
-------------------------	--

<b>CLEARANCE REQUIREMENTS</b>	<b>Combustible</b> Requires Insulating Jacket and Minimum 12" all around <b>Non-Combustible</b> Minimum 12" all around
-------------------------------	---

<b>CUTOUT DIMENSIONS</b>	<b>Opening Width</b> 30.50 inch <b>Opening Height</b> 9.50 inch <b>Opening Depth</b> 19.75 inch
--------------------------	---



## Power Burner

22 inch high output outdoor gas burner

- LED control panel lights
- 304 stainless steel construction
- 60,000 BTU dual ring cast brass burner
- Stainless steel grate with removable wok ring
- Stainless steel top cover
- 9V electronic ignition
- Griddle plate accessory available (Model DHGP18)

<b>DHPW22</b>	Stainless Control Panel
<b>DHPW22-W</b>	White Control Panel
<b>DHPW22-K</b>	Black Control Panel

<b>POWER REQUIREMENTS</b>	<b>Electrical Supply</b> 120V, 60Hz, 2.2A <b>Electrical Service</b> 15 amp dedicated circuit <b>Power Cord Length</b> 5 feet <b>Receptacle</b> 3 prong grounding plug
---------------------------	--

<b>GAS REQUIREMENTS</b>	Natural Gas or Liquid Propane <b>Gas Supply</b> 3/4" ID line <b>Gas Inlet</b> 1/2" NPT female <b>Total BTU</b> 60,000
-------------------------	--

<b>CLEARANCE REQUIREMENTS</b>	<b>Combustible</b> Requires Insulating Jacket and Minimum 12" all around <b>Non-Combustible</b> Minimum 12" all around
-------------------------------	---

<b>CUTOUT DIMENSIONS</b>	<b>Opening Width</b> 19.50 inch <b>Opening Height</b> 11.50 inch <b>Opening Depth</b> 20.75 inch
--------------------------	--

# COOKING ACCESSORIES

## HIGH PERFORMANCE OUTDOOR BURNERS



### Double Side Burners

Built-in outdoor double side burners

- LED control panel lights
- 304 stainless steel construction
- Two 15,500 BTU sealed burners
- 9V electronic ignition
- Stainless steel top cover
- Made in USA

<b>DHSB2</b>	Stainless Control Panel
<b>DHSB2-W</b>	White Control Panel
<b>DHSB2-K</b>	Black Control Panel

<b>POWER REQUIREMENTS</b>	<b>Electrical Supply</b> 9VDC Battery operated
---------------------------	--

<b>GAS REQUIREMENTS</b>	Natural Gas or Liquid Propane <b>Gas Supply</b> 3/4" ID line <b>Gas Inlet</b> 1/2" NPT female <b>Total BTU</b> 27,000
-------------------------	--

<b>CLEARANCE REQUIREMENTS</b>	<b>Combustible/Non-Combustible</b> Minimum 12" all around
-------------------------------	--

<b>CUTOUT DIMENSIONS</b>	<b>Opening Width</b> 10.625 inch <b>Opening Height</b> 7.25 inch <b>Opening Depth</b> 19.75 inch
--------------------------	--



### Drop-In Side Burner

Built-in outdoor side burner

- Drop-in model
- 304 stainless steel construction
- 13,500 BTU sealed burner
- Battery powered electronic ignition
- Stainless steel top cover
- Made in USA

<b>GENERAL</b>	<b>Model</b> DHSBID-C
----------------	-----------------------

<b>POWER REQUIREMENTS</b>	<b>Electrical Supply</b> 1.5 VDC Battery operated
---------------------------	---

<b>GAS REQUIREMENTS</b>	Natural Gas or Liquid Propane <b>Gas Supply</b> 3/4" ID line <b>Gas Inlet</b> 1/2" NPT female <b>Total BTU</b> 13,500
-------------------------	--

<b>CLEARANCE REQUIREMENTS</b>	<b>Combustible/Non-Combustible</b> Minimum 12" all around
-------------------------------	--

<b>CUTOUT DIMENSIONS</b>	<b>Opening Width</b> 10.625 inch <b>Opening Height</b> N/A <b>Opening Depth</b> 16.25 inch
--------------------------	--





## FREESTANDING GRILL BASES



### 26 Inch Pedastal Grill Base

26 inch freestanding outdoor grill pedestal base

The 26 inch outdoor grill base offers a freestanding solution for Dometic Delta Heat Gas Grills



### 32 Inch Grill Base

32 inch freestanding outdoor grill base

The 32 inch outdoor grill base offers a freestanding solution for Dometic Delta Heat Gas Grills



### 38 Inch Grill Base

32 inch freestanding outdoor grill base

The 38 inch outdoor grill base offers a freestanding solution for Dometic Delta Heat Gas Grills



### Griddle Plate

Accessory for gas grill or power burner

Double your cook surface options by adding our griddle plate for a sleek, flat cooktop.

## VENTILATION

### Vent Hood

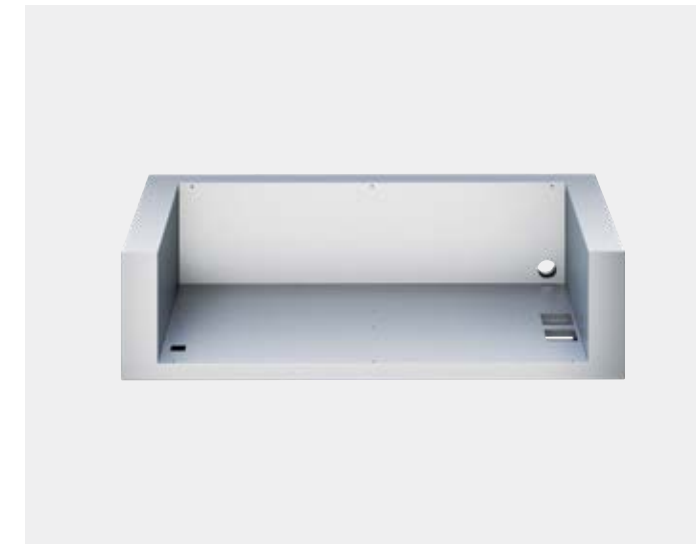
Available in 36", 48", 60", blower motor sold separately

Safely remove excess smoke, odors, and grease to protect your outdoor kitchen area and guests. Our high-performance ventilation hoods draw heat, steam, and grease away from your cooking area. Seamless design complements our grills and accessories. Available in 36 inch, 48 inch and 60 inch sizes.

- Easy to remove, dishwasher safe stainless steel baffle filters
- 3-speed ventilator control
- 2 halogen lamps with dual settings
- Seamless welded construction with high-polished accents
- Internal blower motor (model TEVI-120I) sold separately



## GRILL ACCESSORIES



### Insulation Jacket

For combustible installations

If you plan on installing your grill near any combustible materials, an insulating jacket is required to keep you, your friends, and your family safe. Available for all Gas Grills and Cooking Accessories.



### Vinyl Cover

Available for built-in or freestanding

For all grills in both built-in and freestanding configurations. Also available for cooking accessories including the Power Burner and Teppanyaki Griddle.

# PIZZA OVEN

Elevate Pizza Night



**Pizza Oven**  
30 inch countertop dual burner oven

<b>GENERAL</b>	<b>Model</b> DHPO30F
<b>POWER REQUIREMENTS</b>	<b>Electrical Supply</b> 120V, 60Hz, 5.04A <b>Electrical Service</b> 15 amp dedicated circuit <b>Power Cord Length</b> 5 feet <b>Receptacle</b> 3 prong grounding plug
<b>OVERALL DIMENSIONS</b>	<b>Opening Width</b> 30 inch <b>Opening Height</b> 28 - 29 inch <b>Opening Depth</b> 32.50 inch



**Pizza Oven**  
30 inch built-in dual burner oven

<b>GENERAL</b>	<b>Model</b> DHPO30BI
<b>POWER REQUIREMENTS</b>	<b>Electrical Supply</b> 120V, 60Hz, 5.04A <b>Electrical Service</b> 15 amp dedicated circuit <b>Power Cord Length</b> 5 feet <b>Receptacle</b> 3 prong grounding plug
<b>CUTOUT DIMENSIONS</b>	<b>Opening Width</b> 32.50 inch <b>Opening Height</b> 28.19 - 29.19 inch <b>Opening Depth</b> 28.50 inch



# STORAGE AND BAR ACCESSORIES



### Single Access Door

Available in horizontal (24in) or vertical (16in, 18in)

- 304 Stainless steel construction
- Adjustable European hinges
- Available in left or right hinged variations



### Double Access Doors

Available in 26in, 30in, 32in, 36in, 38in)

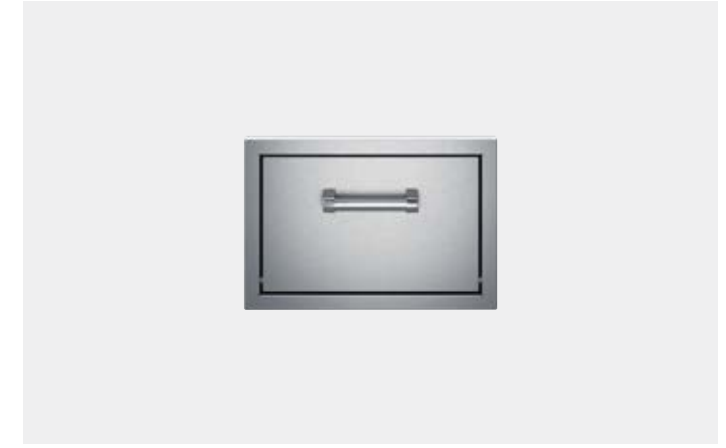
- 304 Stainless Steel construction
- One-piece 18 gauge frame
- Adjustable European hinges



### Trash Drawer

18 in available in compact or tall versions

- Tall version available in single or double trash can configurations
- Compact 20 inch model will accommodate trash or LP tank
- 304 Stainless Steel construction
- Trash Chute available (DHTC)



### Paper Towel Holder

15 in outdoor storage compartment

- 304 Stainless Steel construction
- One-piece 18 gauge frame
- Swing down access compartment provides easy access



### Storage Drawers

Available in 13 inch double drawers

- 304 Stainless Steel construction
- One-piece 18 gauge frame
- Full extension heavy duty drawer slides
- Two drawer configurations



### Door and Drawer Combo

Available in 30in or 36in

- 304 Stainless Steel construction
- One-piece 18 gauge frame
- Adjustable European hinges
- Full extension heavy duty drawer slides
- Two drawer, one door configurations



### Drop-In Sink

15in outdoor sink

- Seamless welded 304 Stainless Steel construction
- Large basin accommodates oversized items
- 2 inch stainless steel basket drain
- Cold faucet included



### Drop-In Cooler

15in wide stainless ice bin

- Seamless welded 304 Stainless Steel construction
- Insulated lid with gasket seal
- 20in depth for increased capacity
- Brass drain with plug
- Heavy duty hinges





**DOMETIC RESIDENTIAL US**  
13259 East 166th Street  
Cerritos, CA 90703  
Tel 800 789 2206  
[dometic.com/deltaheat](http://dometic.com/deltaheat)

